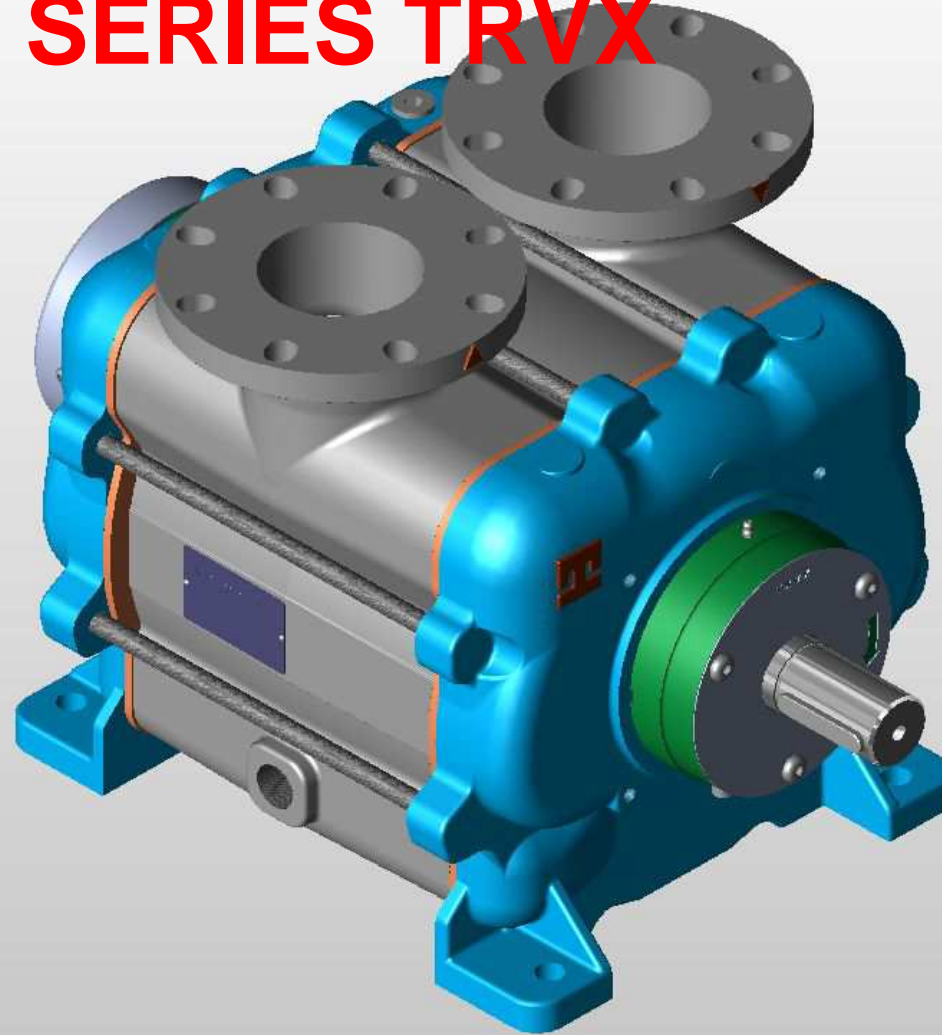
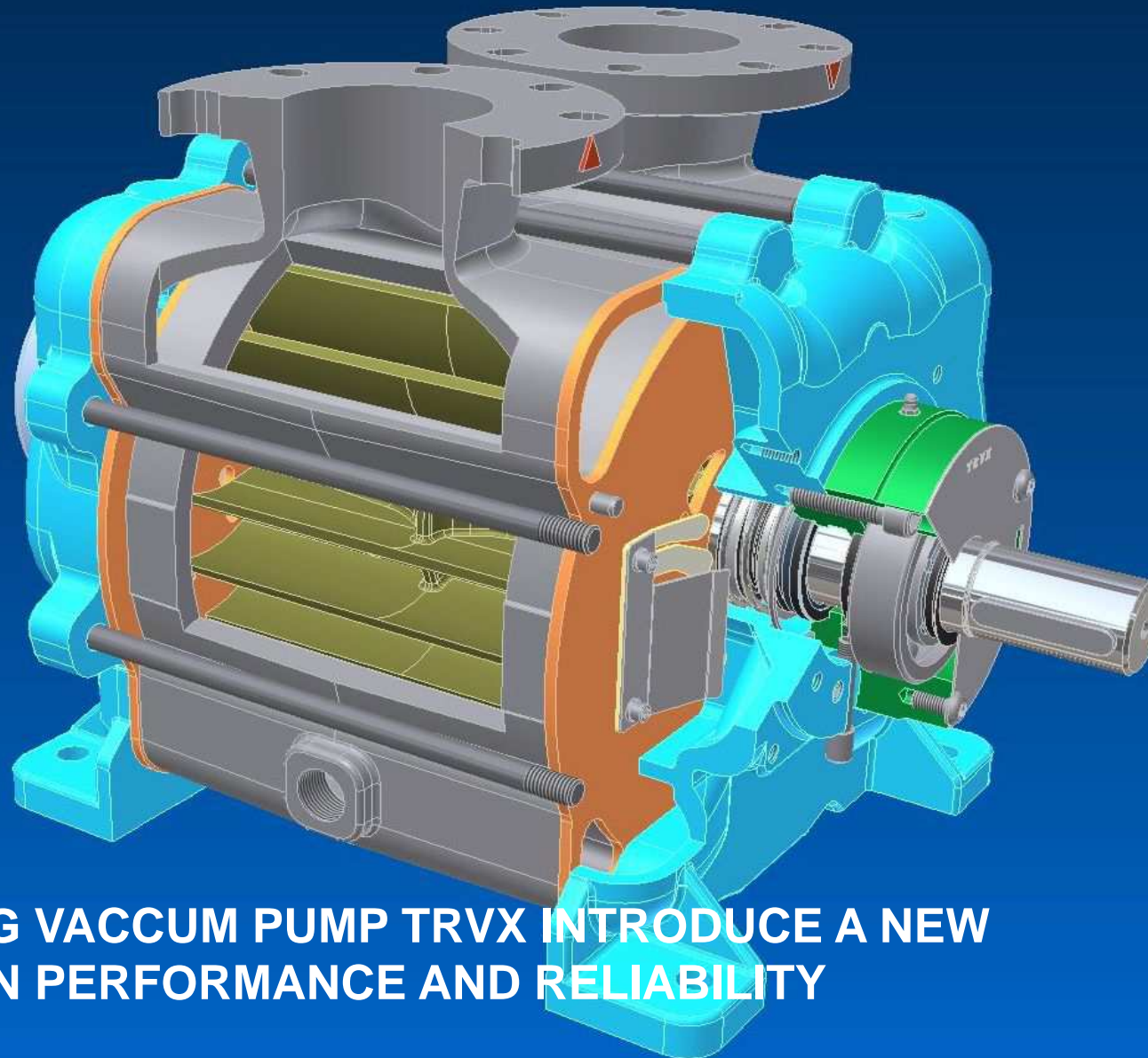


LIQUID RING VACUUM PUMPS SERIES TRVX



THE NEW GENERATION

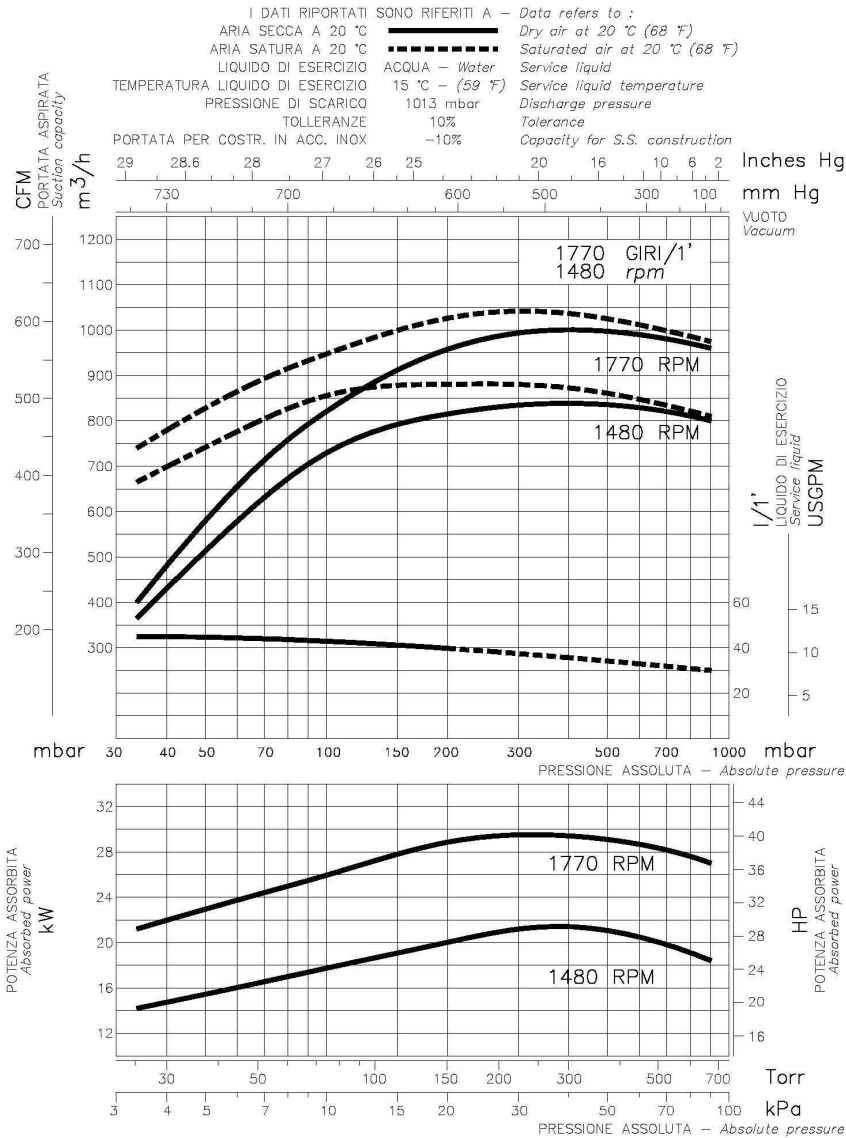
SINGLE STAGE, VARIPORTED, DESIGN



LIQUID RING VACCUM PUMP TRVX INTRODUCE A NEW
CONCEPT IN PERFORMANCE AND RELIABILITY



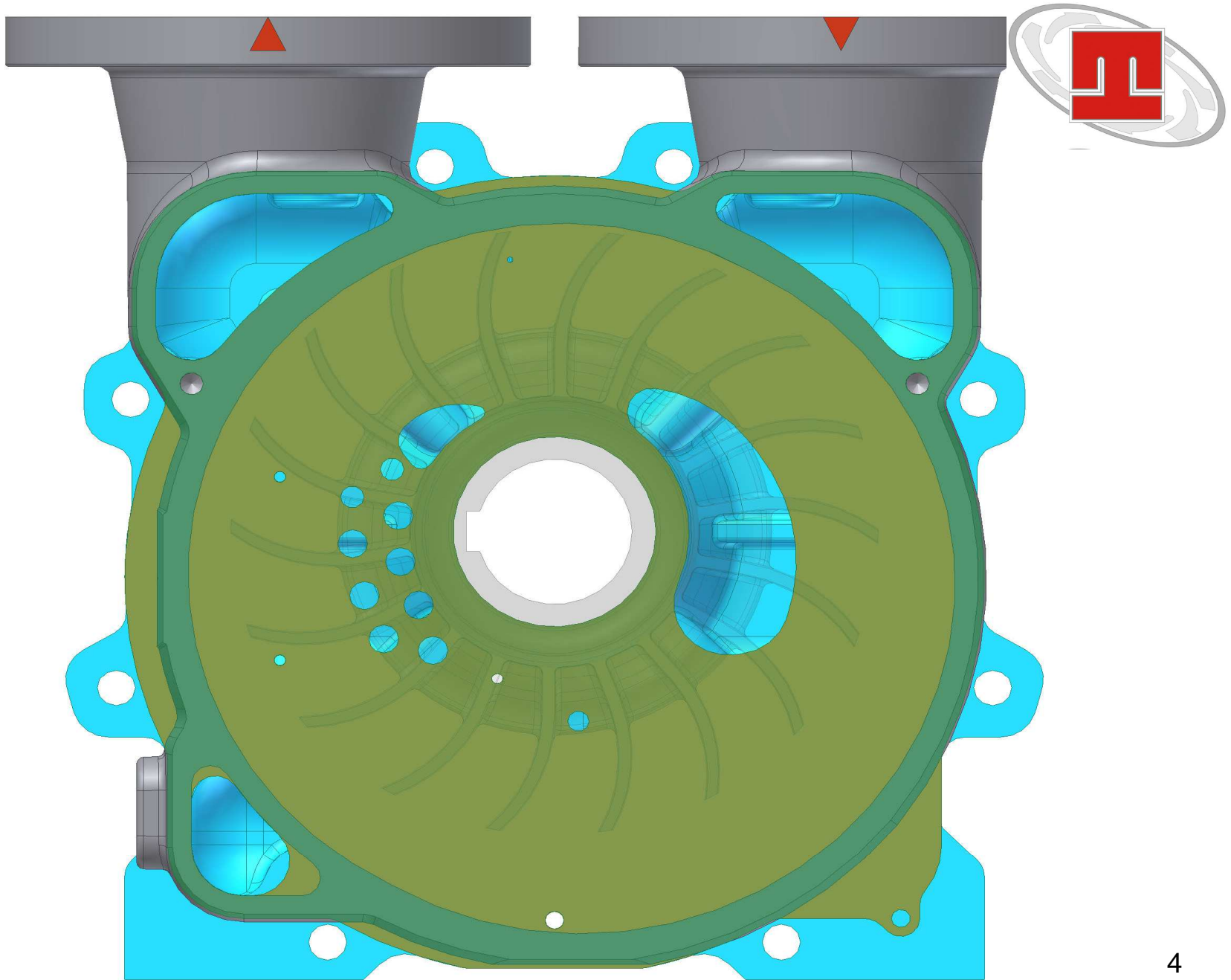
DIAGRAMMA DI FUNZIONAMENTO
 Performance curves
 POMPA PER VUOTO AD ANELLO DI LIQUIDO
 Liquid ring vacuum pump
 TIPO
 Type **TRVX 1007**

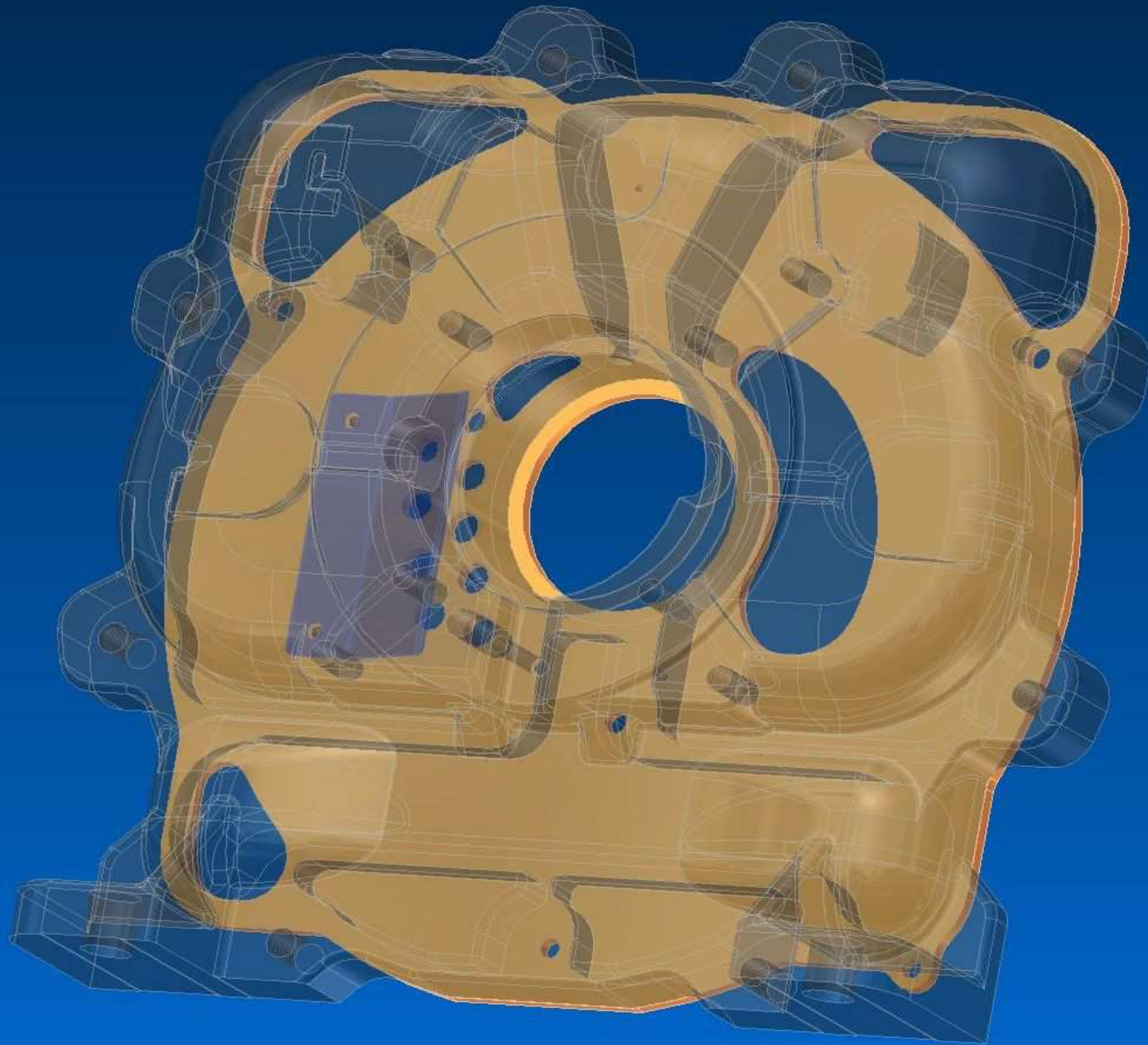


RIF.-Ref.: F.P./C.T. DATA-Date: 05-2006 SOST.-Repl.: N°: 7267.150.01.01-02

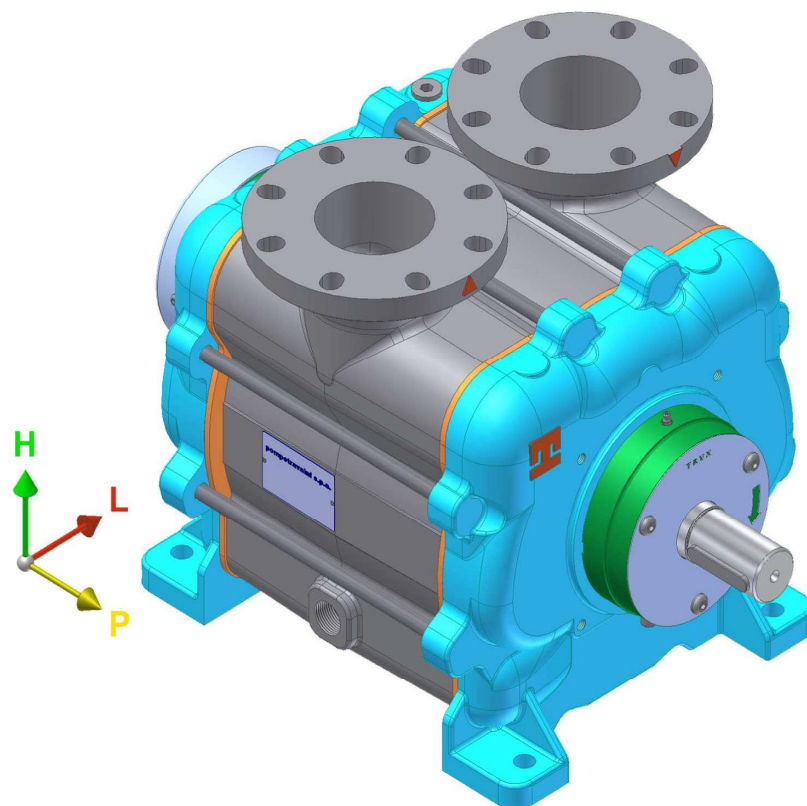


- The new hydraulic profile allows a performance increase over 10% than traditional liquid ring vacuum pump design. Increases efficiency and operational cost savings.
- Service water consumption reduced with sensible water supply and disposals costs saving and protect environment.



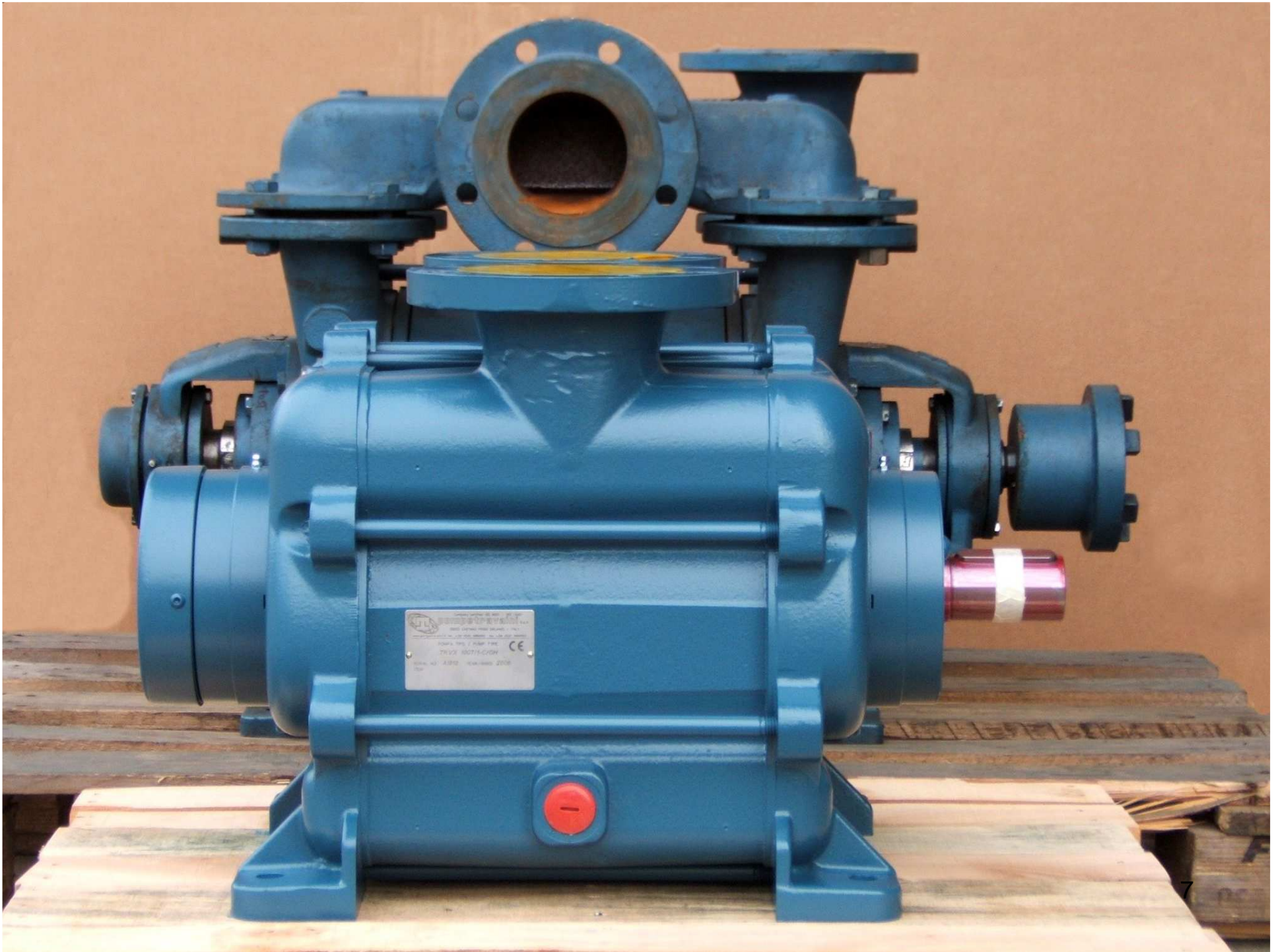


TRVX 1007/1 vs World's Pumps

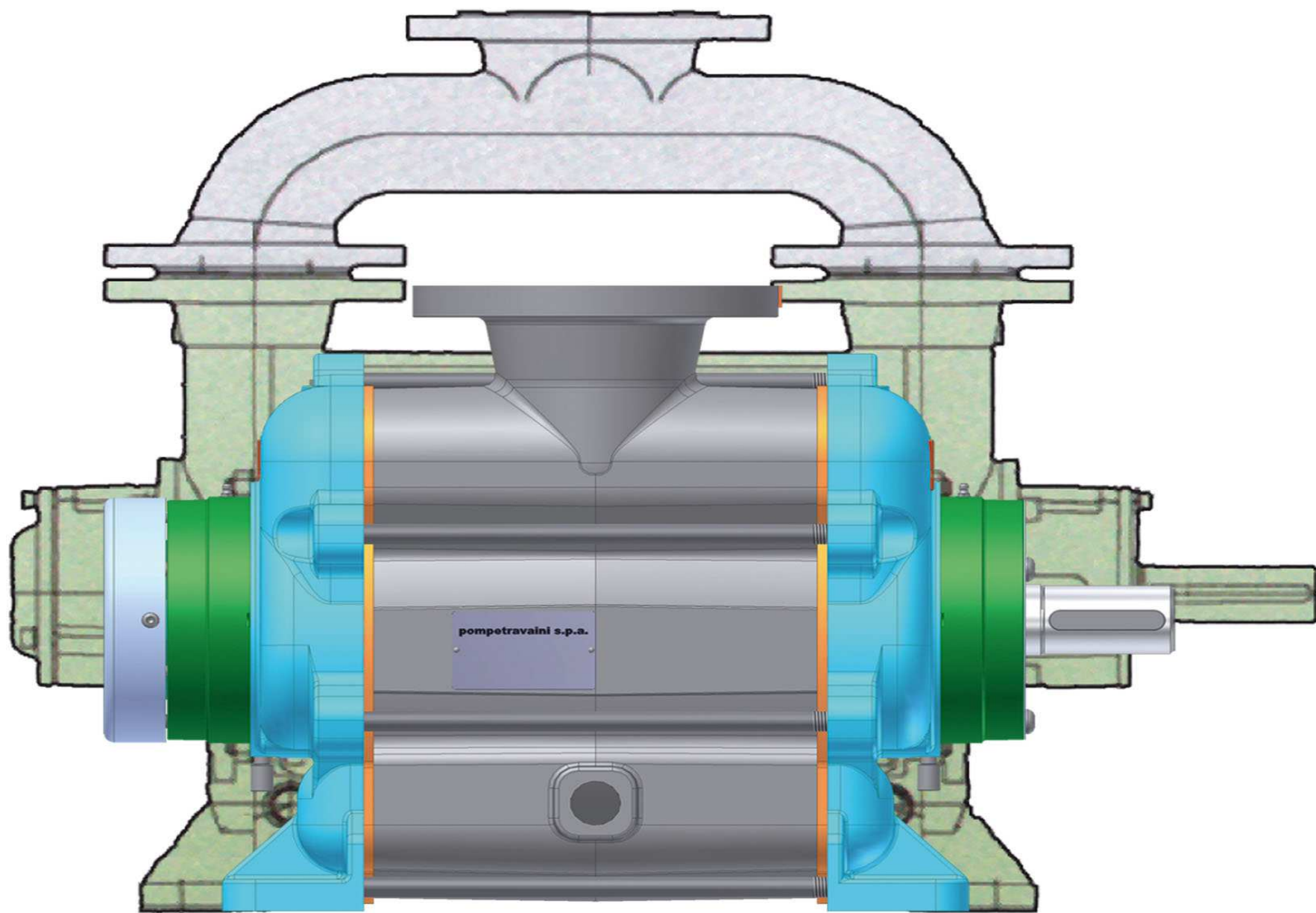


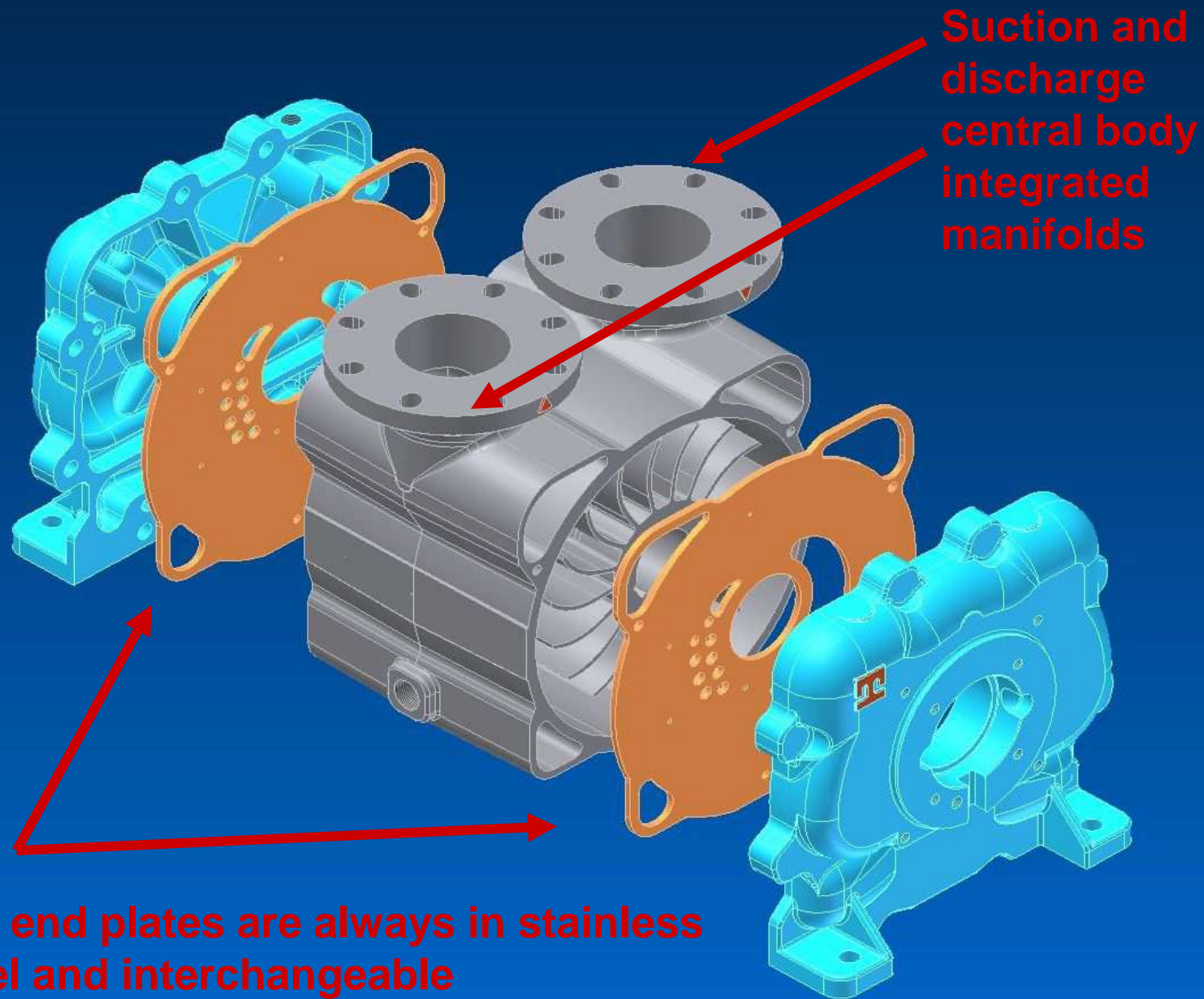
- The weight is 30% less, compared with the traditional liquid ring vacuum pumps design
- Compact dimensions (L x W x H) 40% less compared with the traditional liquid ring vacuum pumps design

Pump type	P	H	L	m ³	Kg
<i>DVT</i>	801	640	470	0.24	205
<i>Robuschi</i>	791	636	460	0.231	235
<i>SIHI</i>	886	600	460	0.245	225
<i>Pompetravaini</i>	640	430	460	0.127	170



COMPATREVA S.p.A.
VIA S. GIUSEPPE, 10 - 20139 MILANO (MI) - ITALY
TELEFONO: 02 57501111 - FAX: 02 57501112
E-MAIL: COMPATREVA@COMPATREVA.IT
WWW.COMPATREVA.IT
CE
Modello: 30711-001H
Data: 02/2000

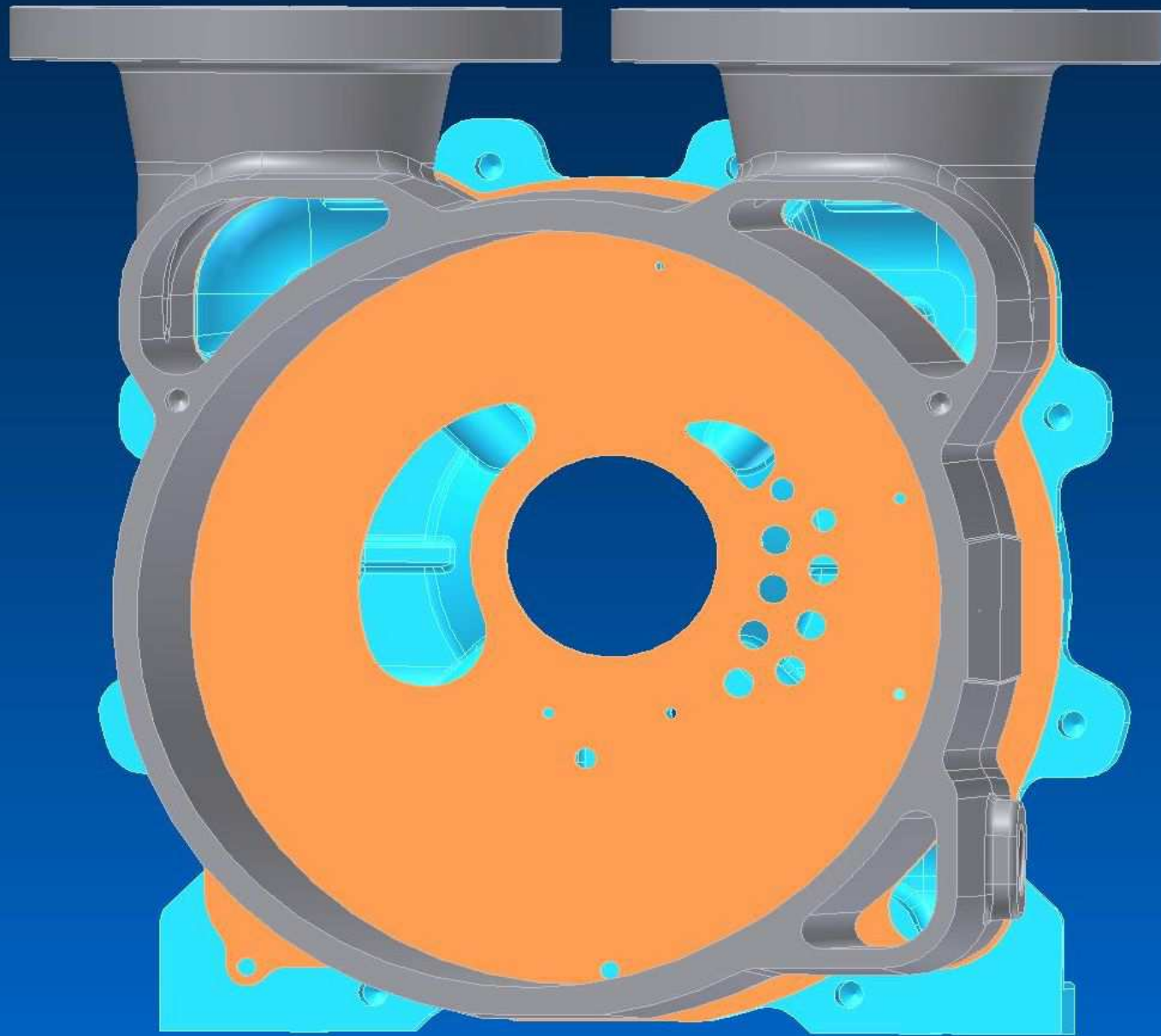




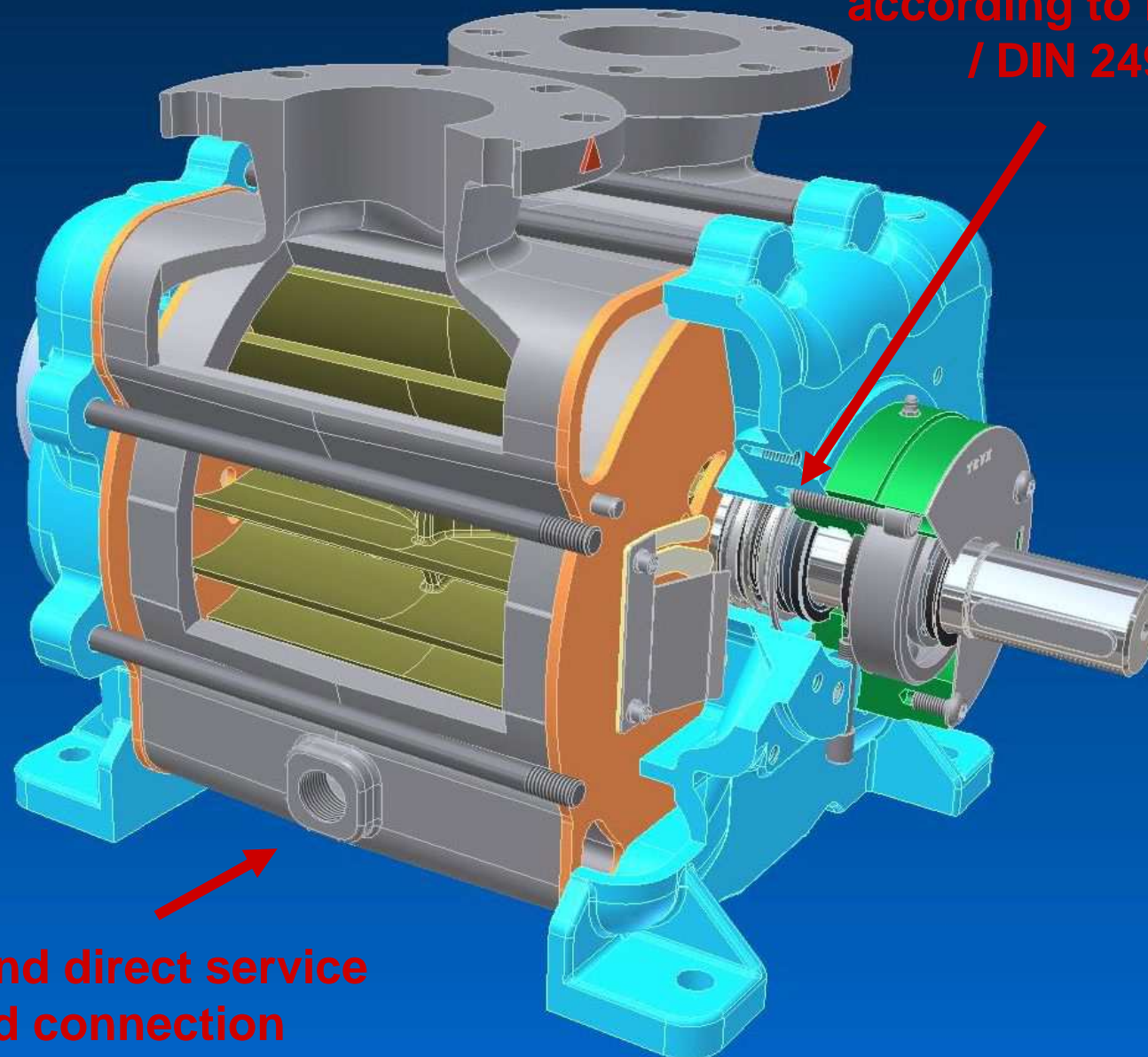
Suction and discharge central body integrated manifolds

The end plates are always in stainless steel and interchangeable



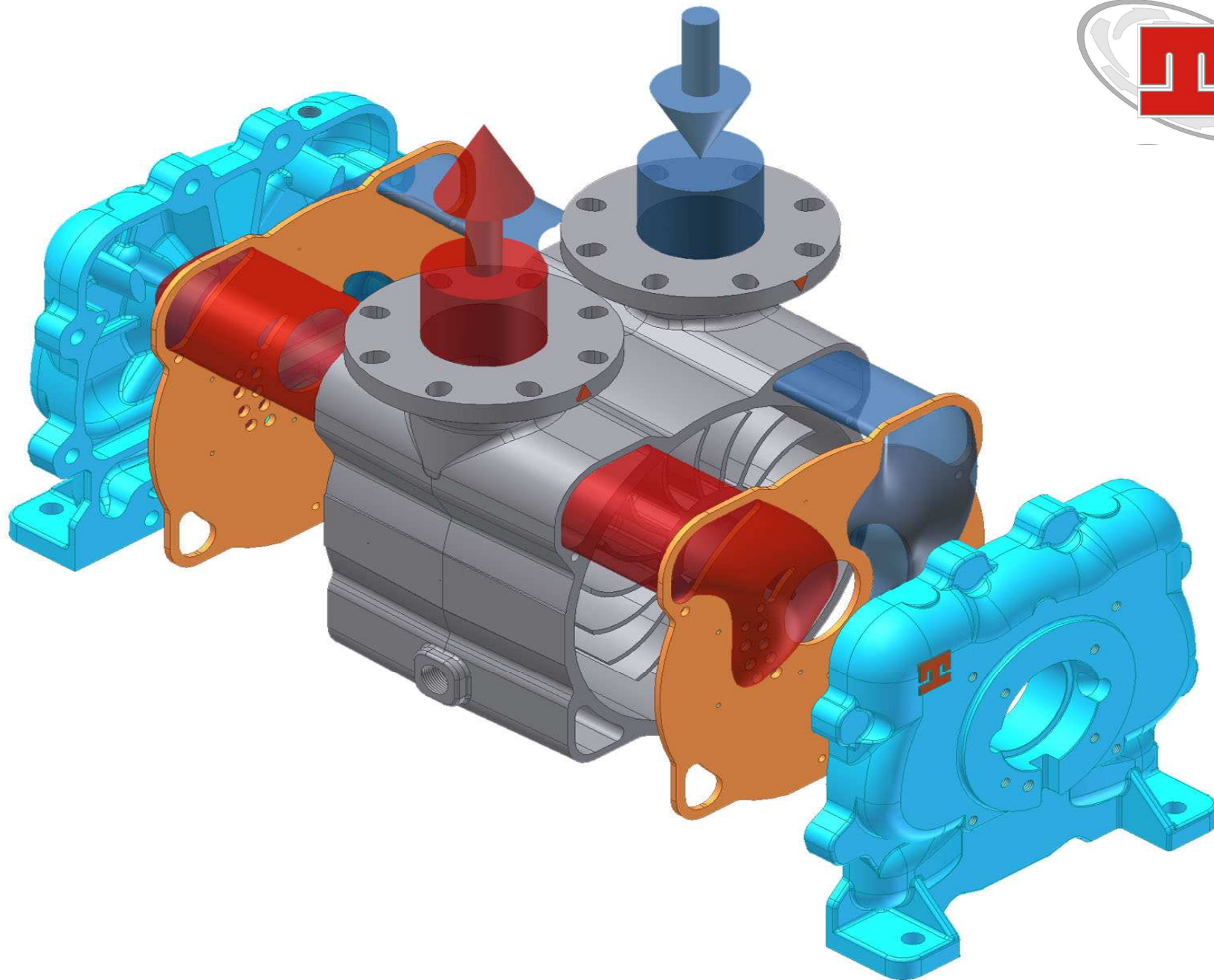


**Mechanical seal
according to ISO 3069
/ DIN 24960**



**Single and direct service
liquid connection**

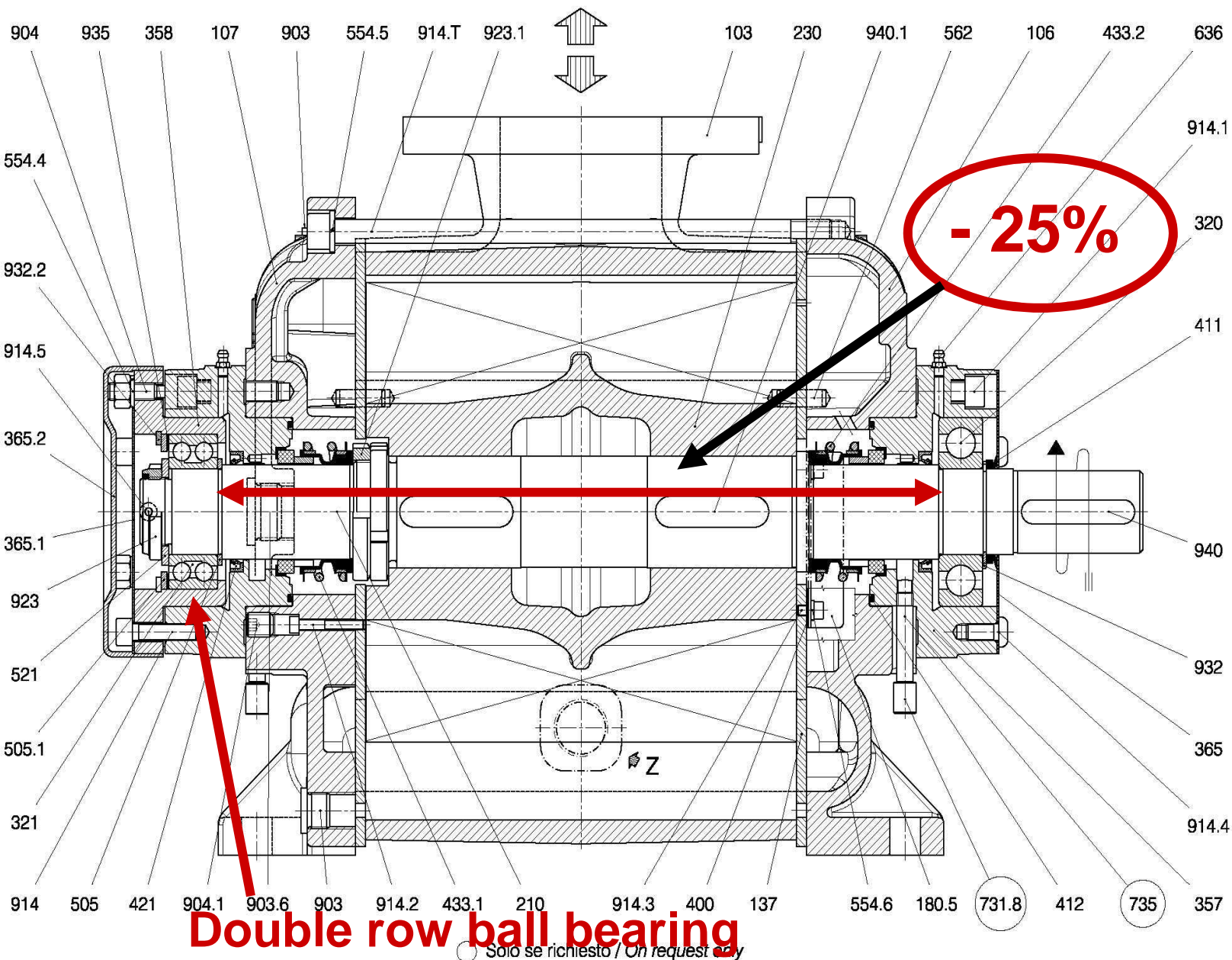




TRVX 1007/1-C



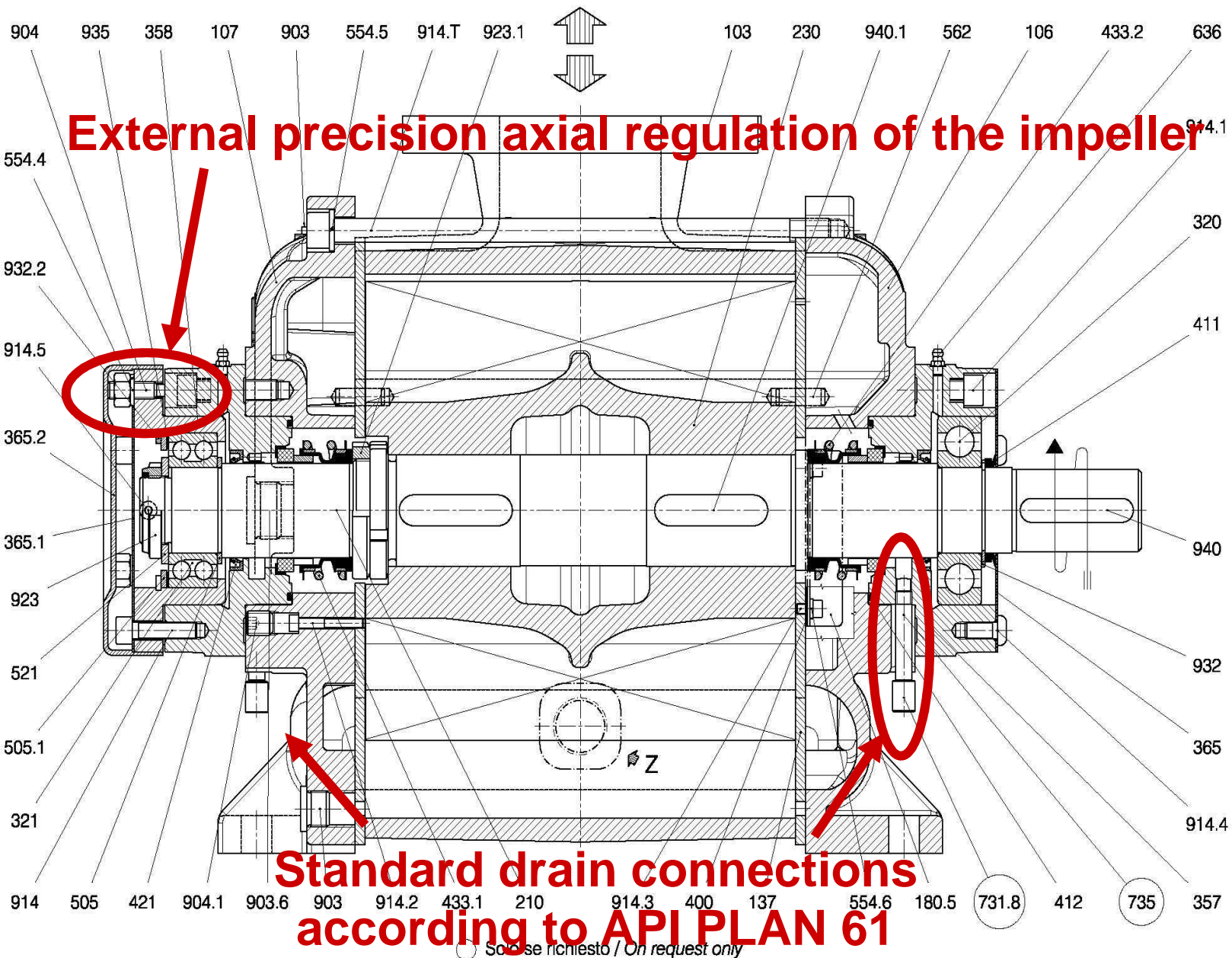
pompetravaini S.p.A.
CASTANO PRIMO (MILANO)



RIF. - Ref.: E.C./C.T.
DATA - Date: Novembre 06 - November 06

SOSTITUISCE - Replaces: -
N°.: 7267.1L1.301.01

TRVX0003

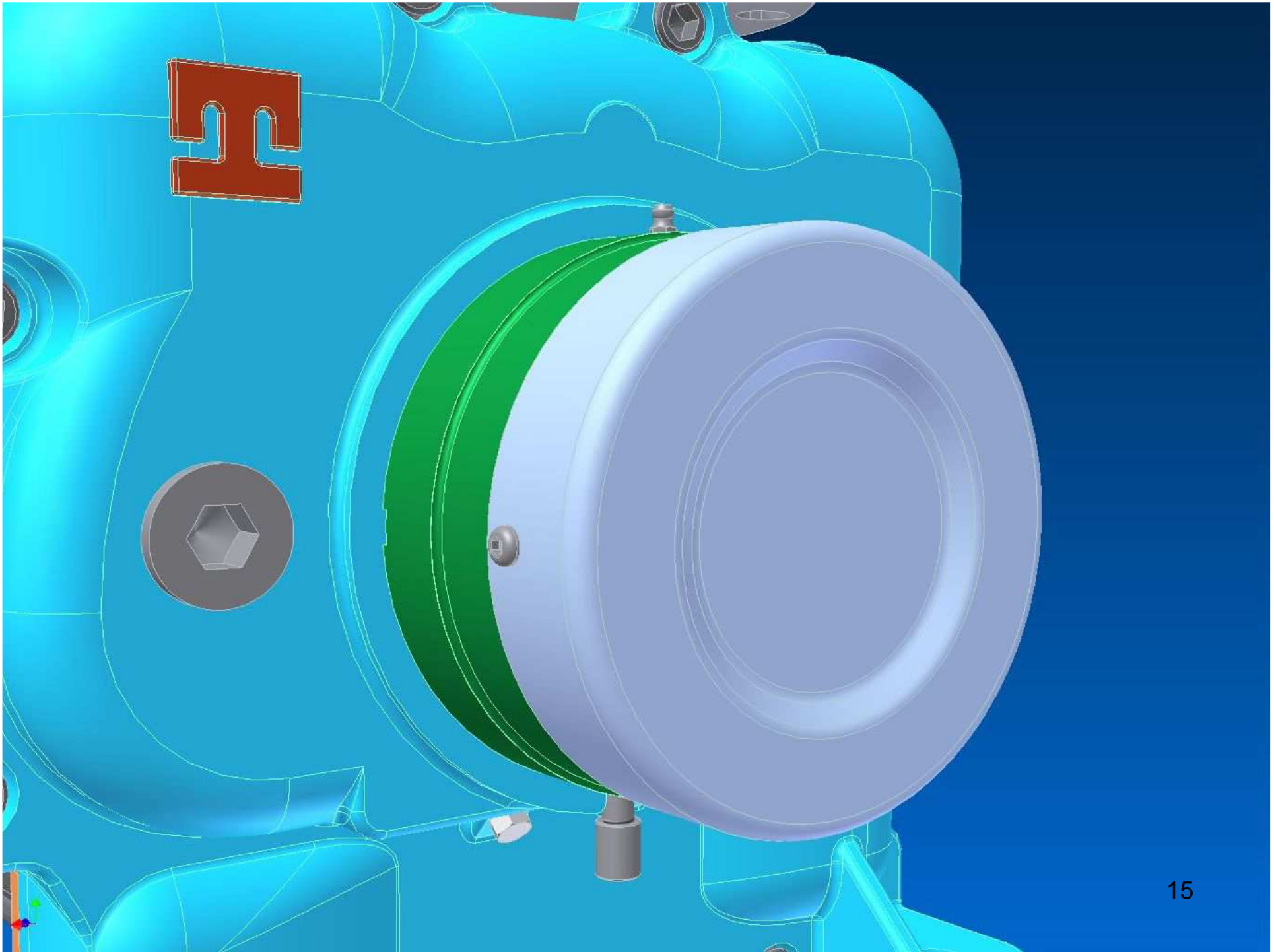


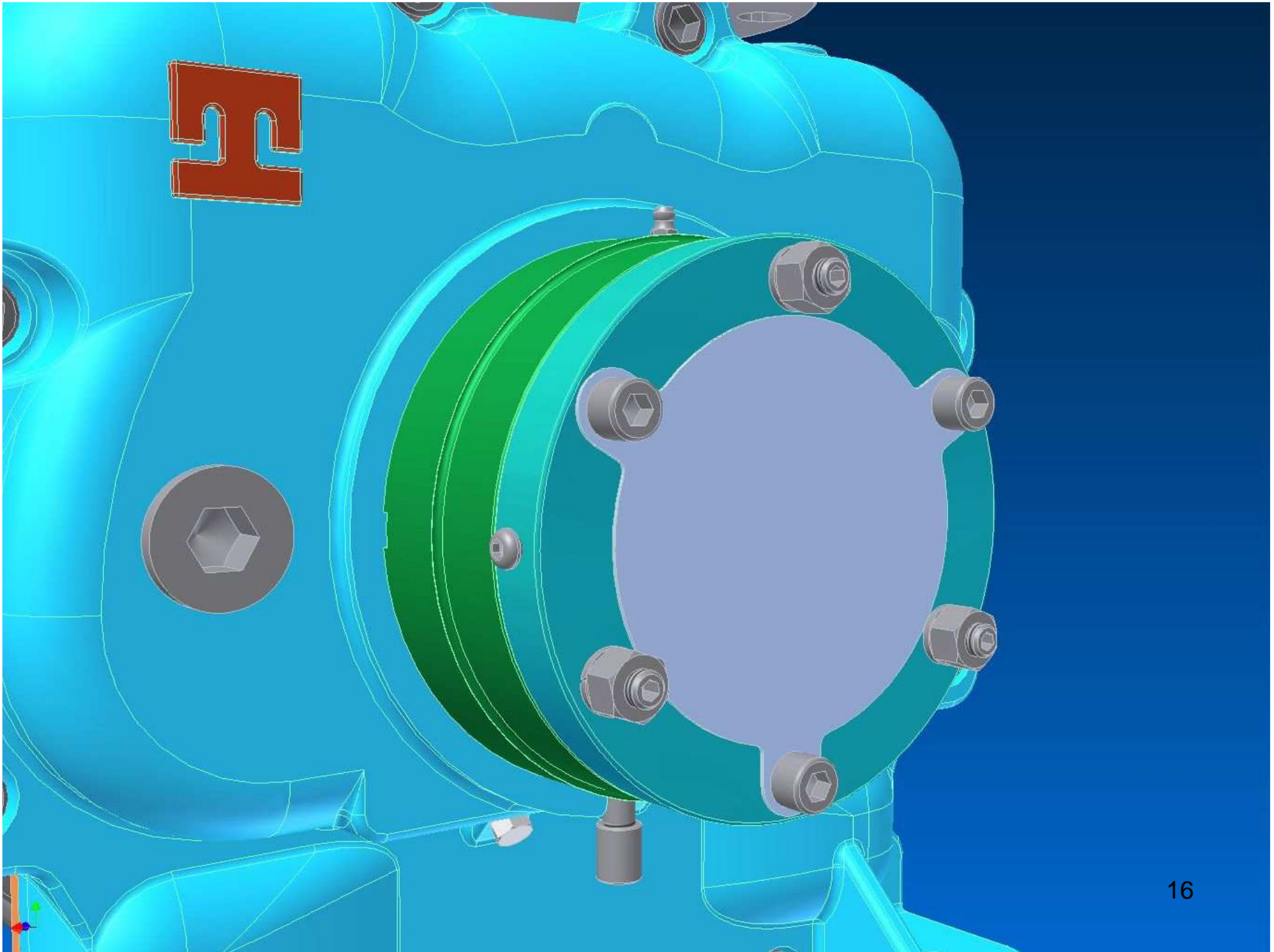
External precision axial regulation of the impeller

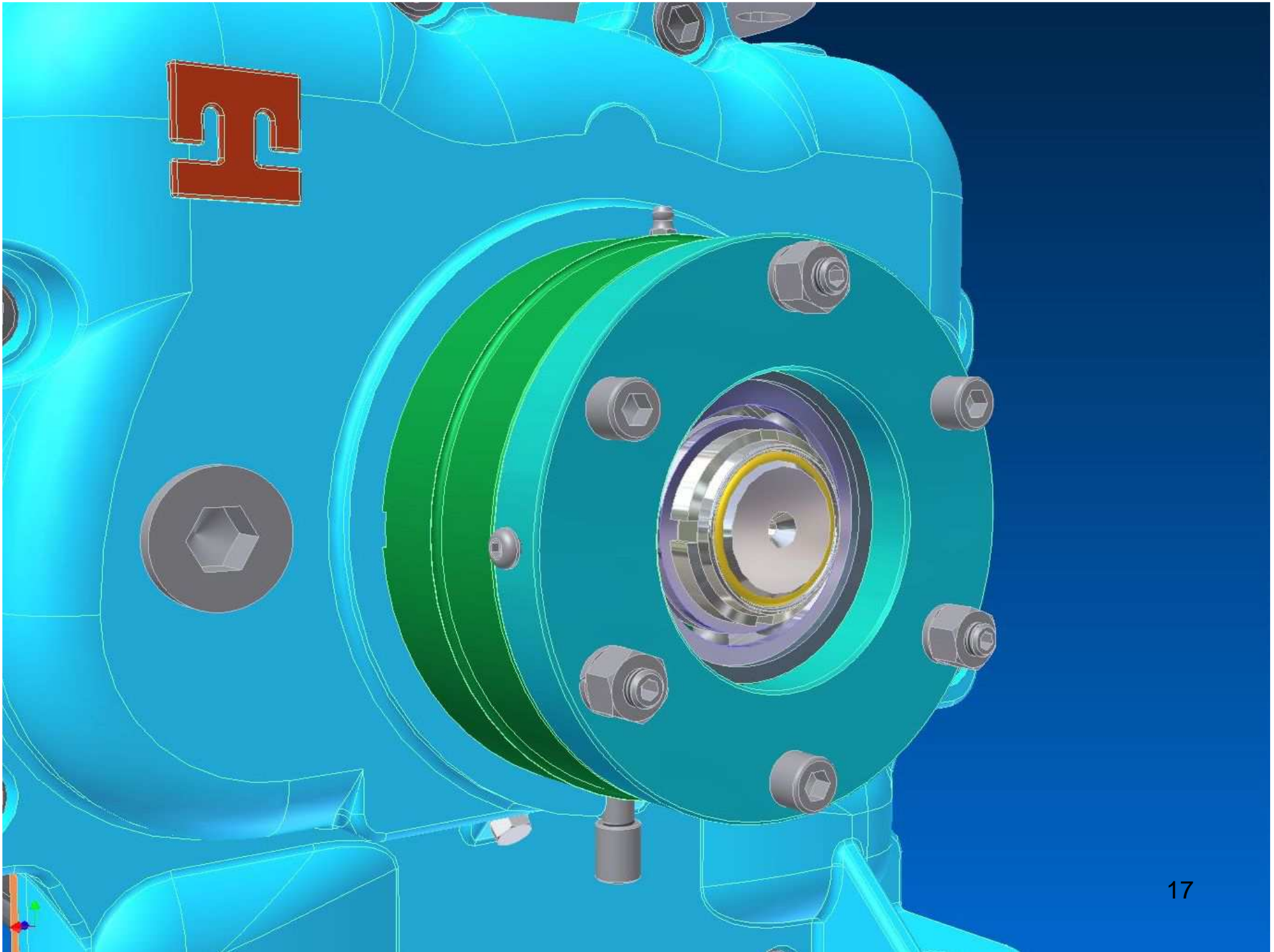
**Standard drain connections
according to API PLAN 61**

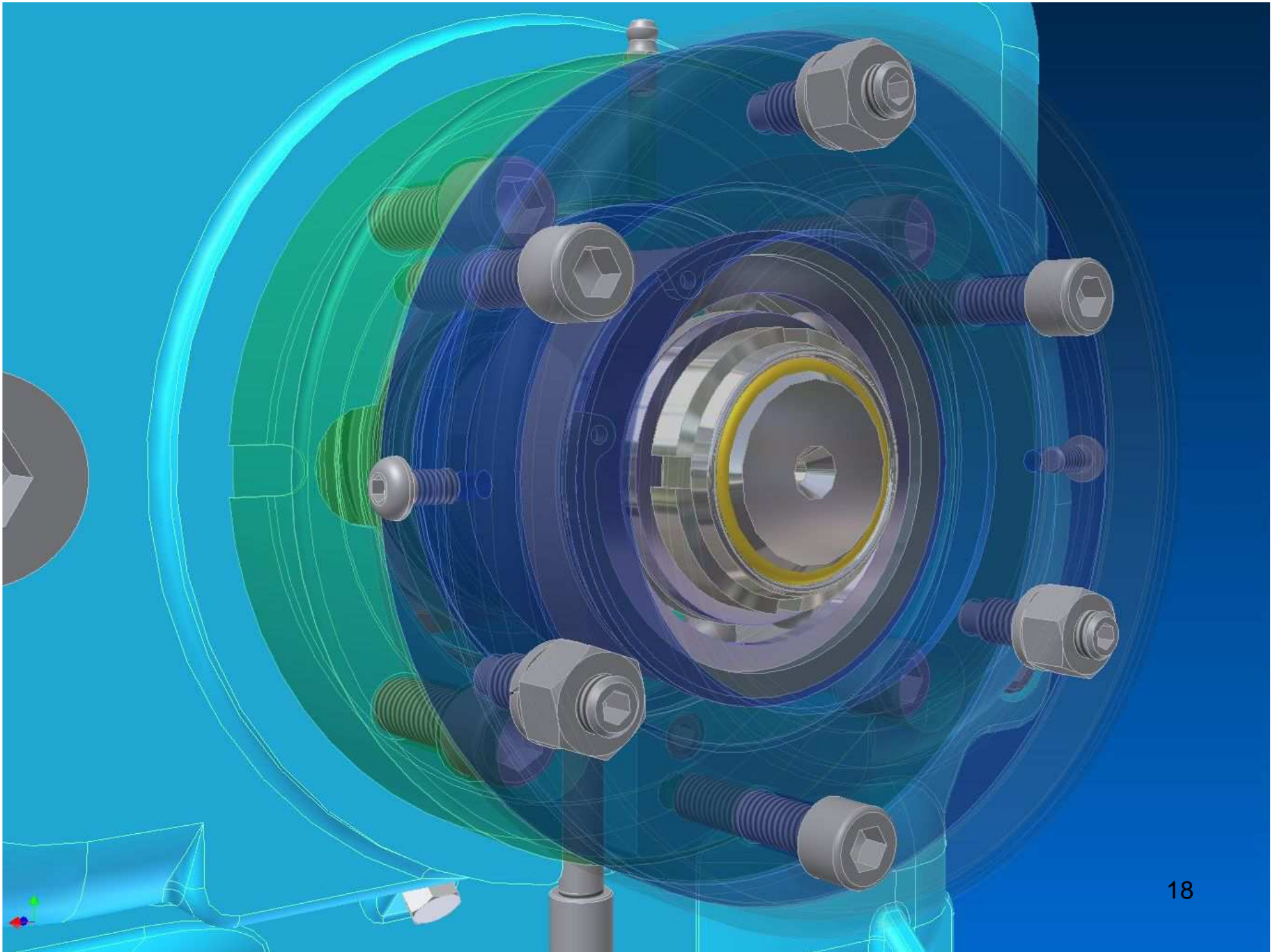
○ Soli se richiesto / On request only

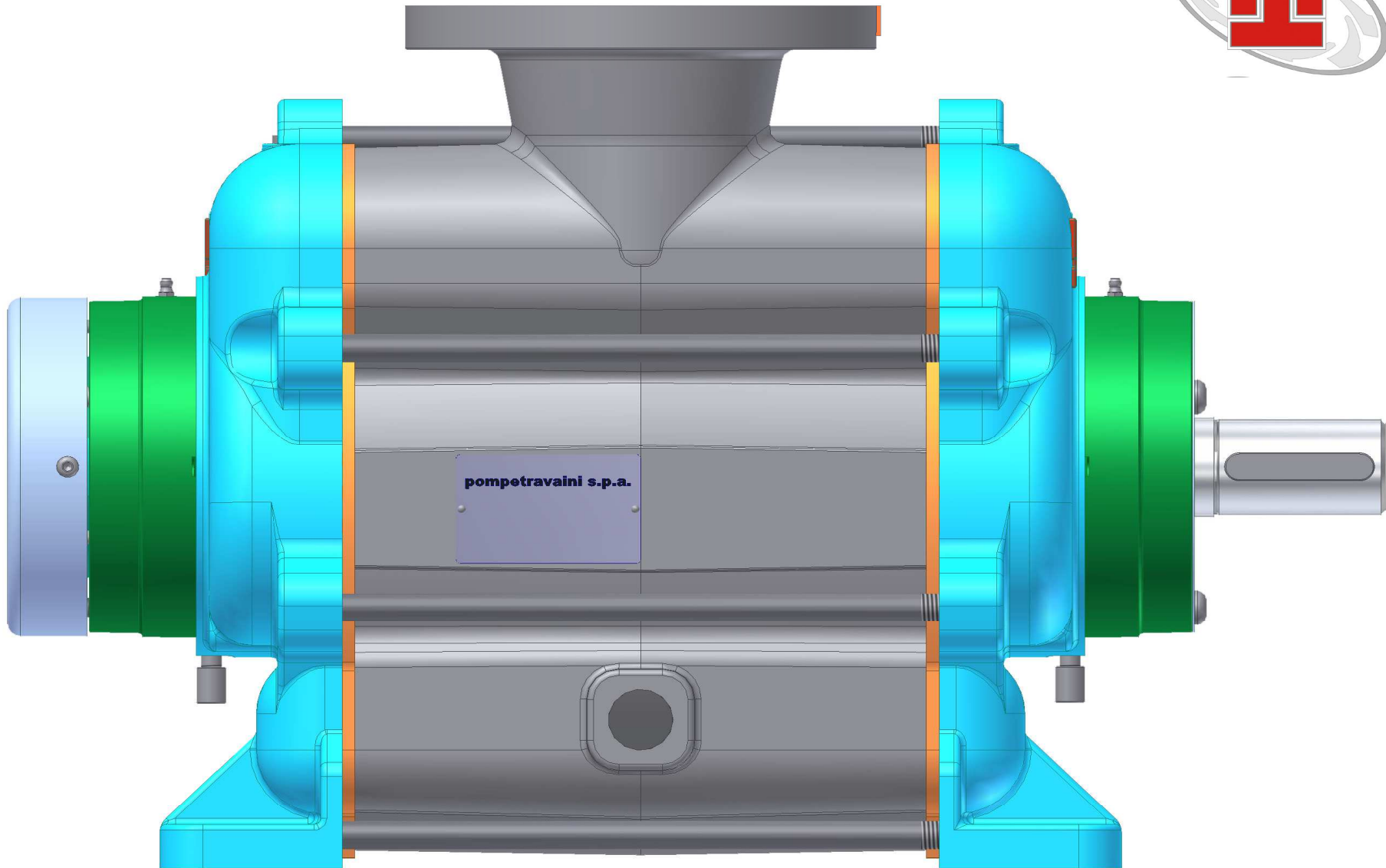
RIF. - Ref.: E.C./C.T.
DATA - Date: Novembre 06 - November 06
SOSTITUISCE - Replaces: -
N°.: 7267.1L1.301.01
TRVX0003

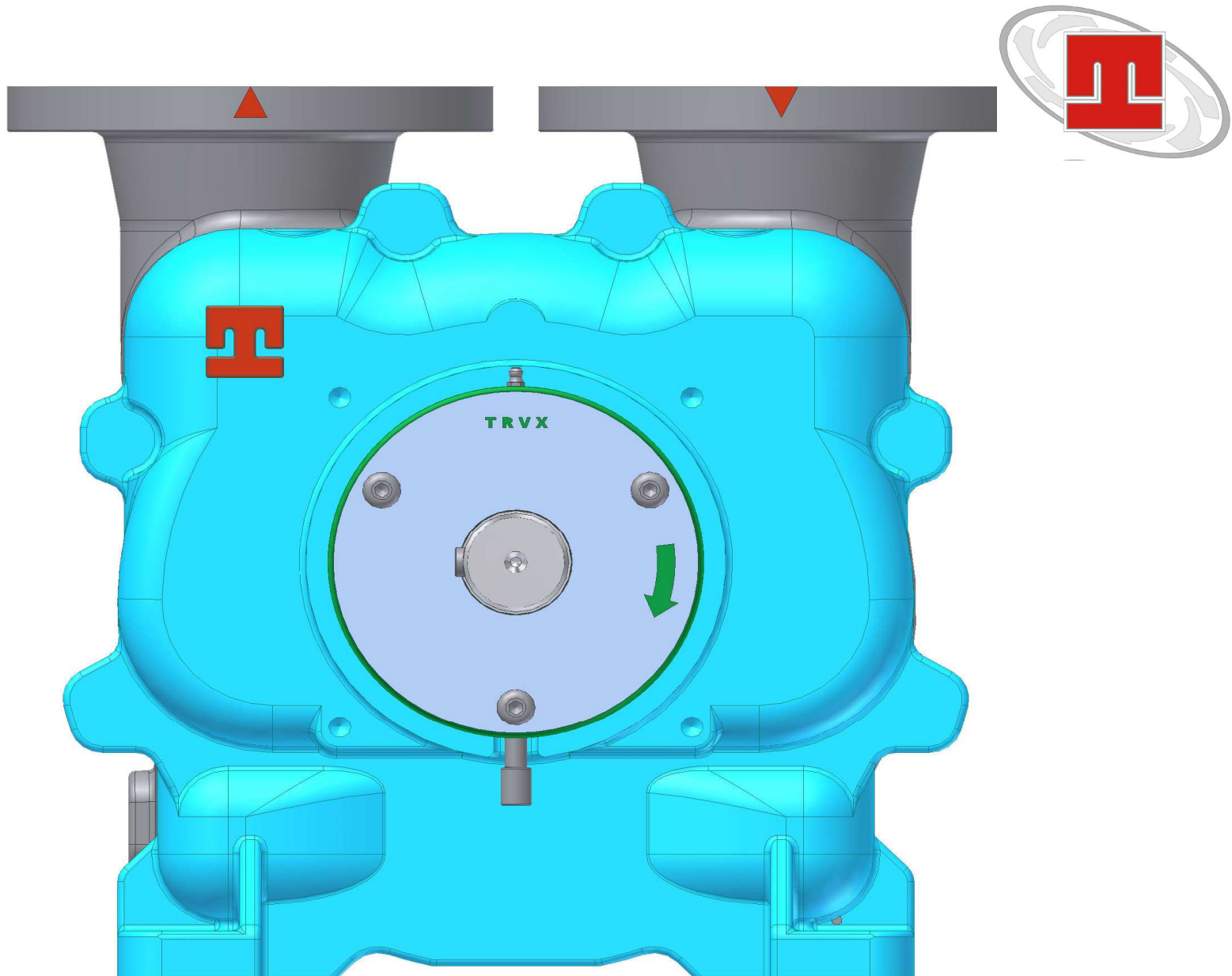






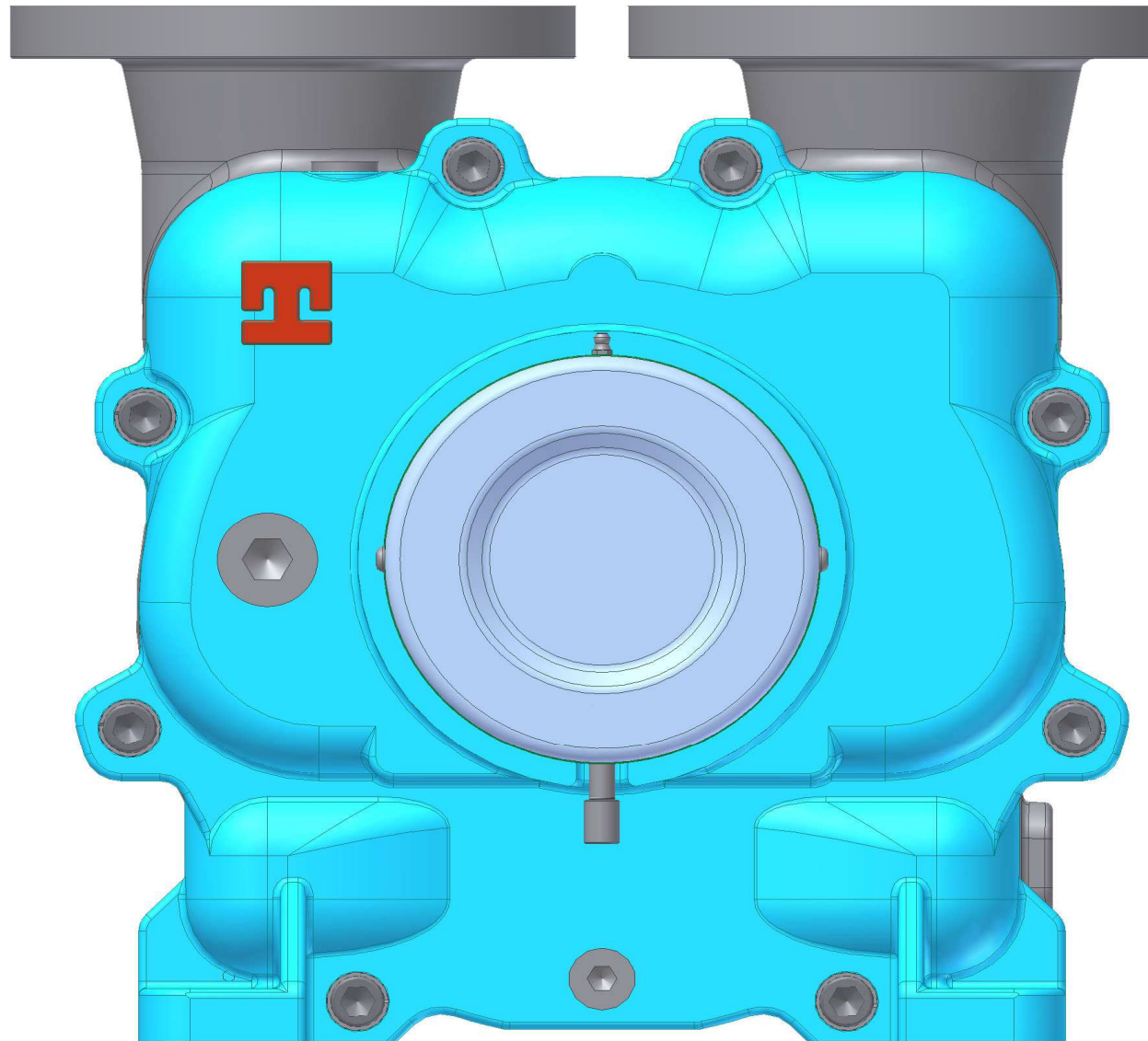






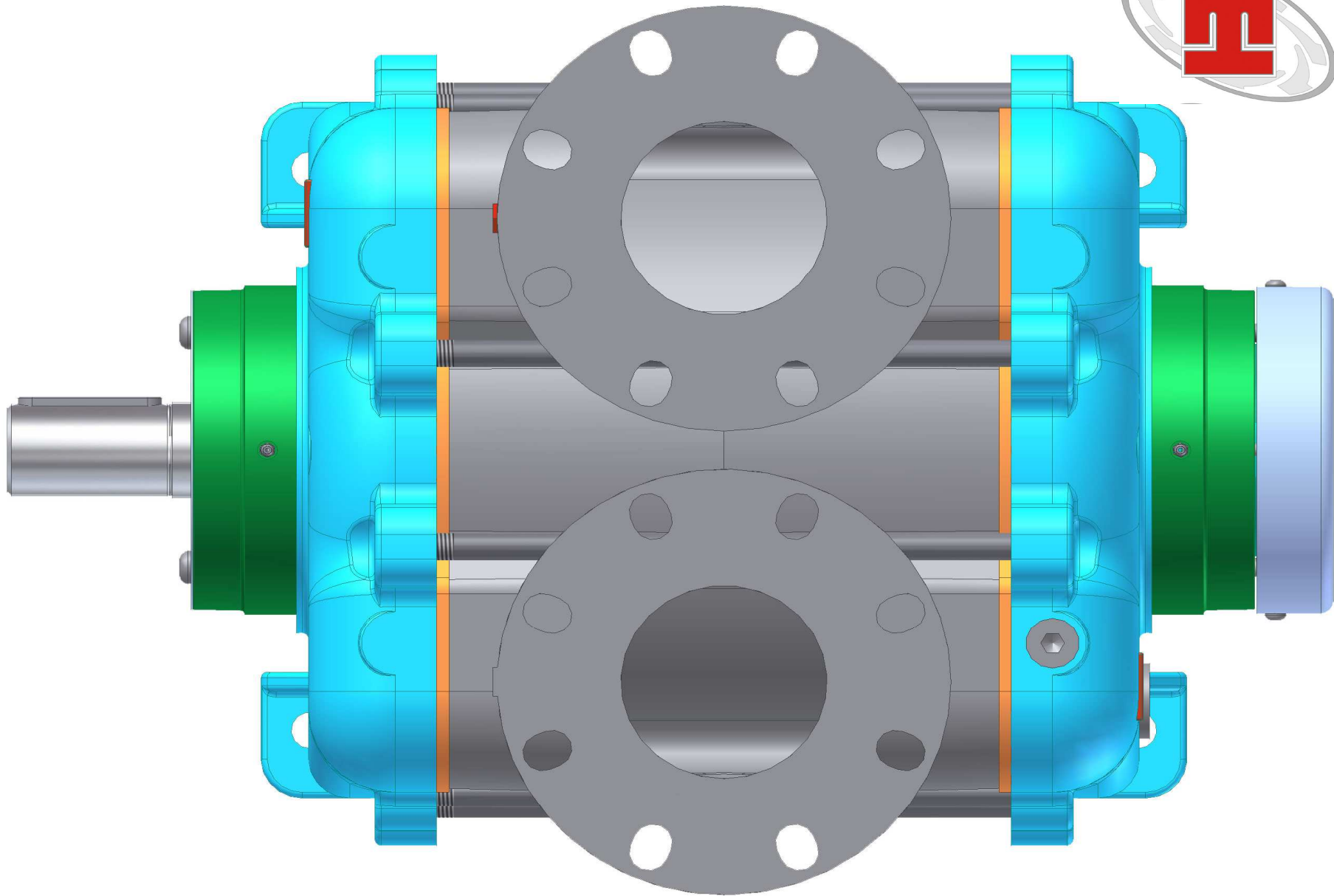
Clean drive end





All connections and bolting on no-drive end



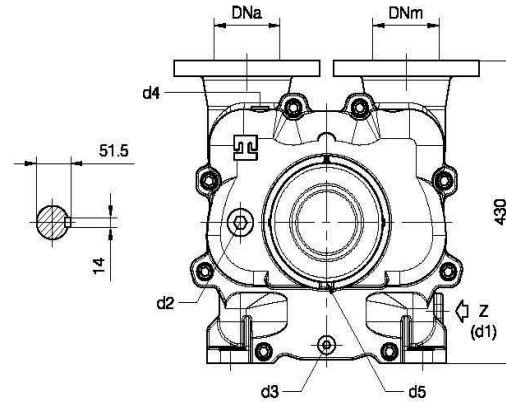


Flanges meet DIN EN and ANSI standards





BARESHAF construction

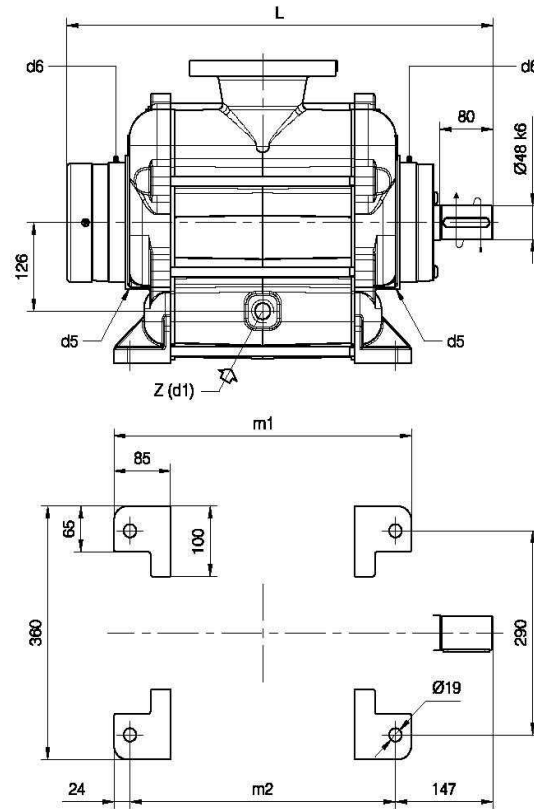


- d1 Connessione filettata Ø1" Gas - per ingresso alimentazione
 Ø1" Gas threaded connection - for liquid supply inlet
- d2 Attacco tappato Ø1" Gas - connessione ausiliaria
 Ø1" Gas plugged connection - auxiliary connection
- d3 Attacco tappato Ø1/2" GAS - per scarico corpo pompa
 Ø1/2" GAS plugged connection - for pump casing drain
- d4 Attacco tappato Ø1/2" Gas - per manovacuometro
 Ø1/2" Gas plugged connection - for manovacuum gauge
- d5 Connessione filettata Ø1/8" Gas - per drenaggio tenute meccaniche
 Ø1/8" Gas threaded connection - for mechanical seal drain
- d6 Connessione ingrassatore - per lubrificazione cuscinetti tipo 3210 e 6310
 Greaser connection - for ball bearings type 3210 and 6310 lubrication

Nota / Note :

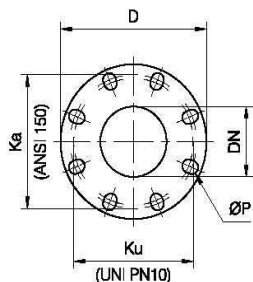
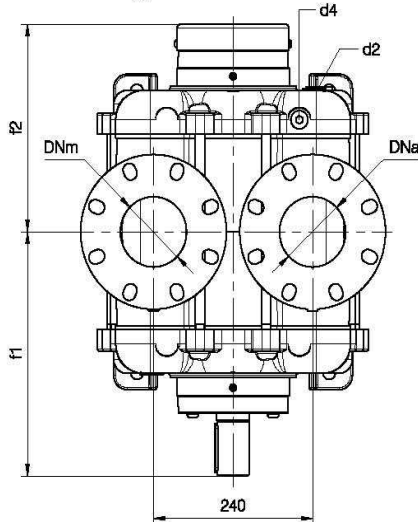
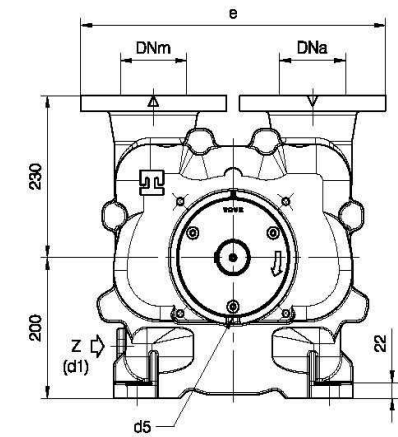
- Lt Quantità di acqua all'asse dell'albero in litri
 Water quantity at shaft axis in liters
- Mi Momento di Inerzia Max all'avviamento
 Max Moment of Inertia at start-up

Versione ad **ASSE NUDO**



FLANGE SPECIALI / SPECIAL FLANGES
 Dimensioni foratura secondo UNI 2223 PN10 e ANSI 150
 Drilling dimensions according to UNI 2223 NP10 and ANSI 150

Dimensioni flange Flanges dimensions					
DNa-DNm	D	Ku	Ka	P	N° fori holes
100	220	180	190.5	19	8



POMPA TIPO Pump type	Dimensioni costruttive Construction dimensions										
	DNa	DNm	e	L	f1	f2	m1	m2	Peso Weight	Mi kgm ²	Lt
TRVX 1007	100	100	460	642	347	295	448	400	170	0.47	10

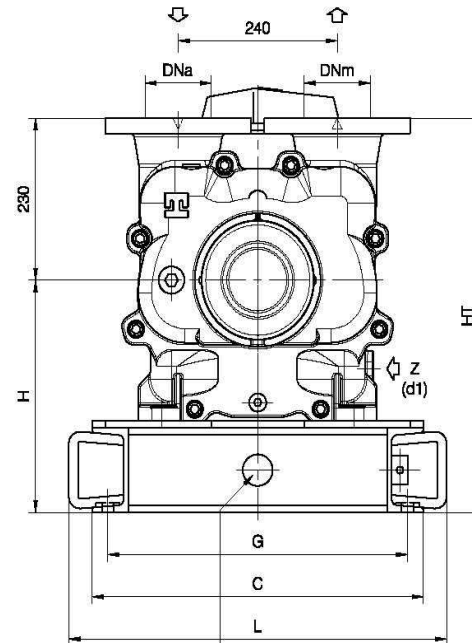
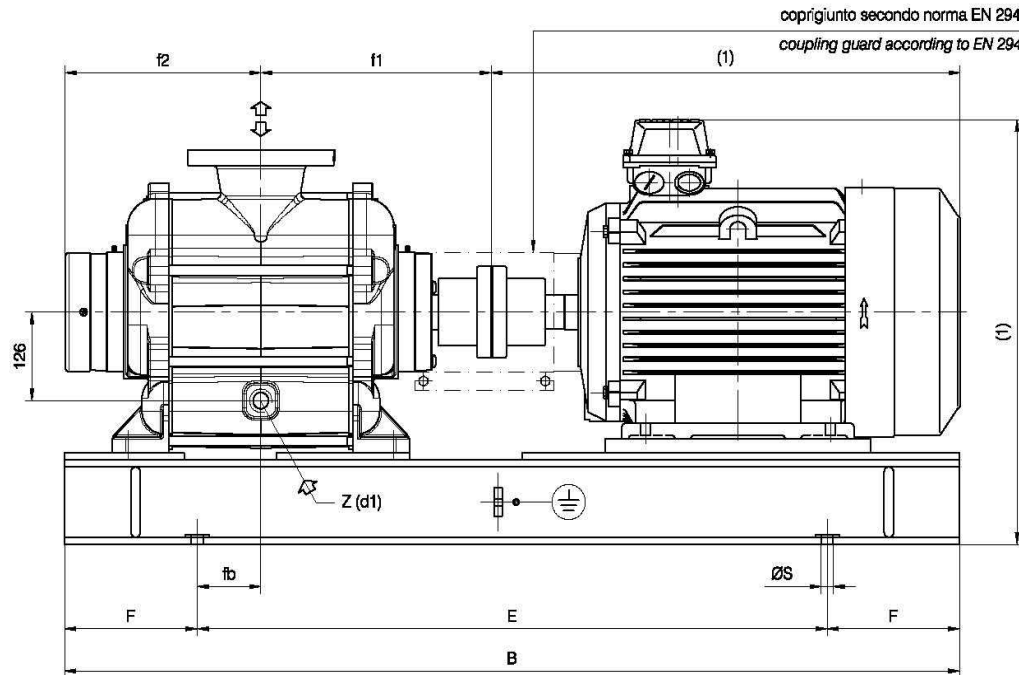
Disegno schematico. Dimensioni in mm con tolleranze secondo EN 735-1995.
 Pesì indicativi in Kg, riferiti a pompe in ghisa escluso motore, non impegnativi.
 Schematic drawing. Dimensions in mm with tolerances to EN 735-1995 standards.
 Weights in Kgs, referred to pumps in cast iron without motor, not certified.

RIF. - Ref.: E.C./C.T.
 DATA - Date: Dicembre 06 - December 06

SOSTITUISCE - Replaces: 7261-67.1L3.2001.01.01
 N°.: 7261-67.1L3.2001.02.01

Versione **ACCOPIATA (BASE-GIUNTO)**

COUPLED construction (BASEPLATE-COUPLING)



drenaggio basamento Ø1/2" GAS (optional)
 baseplate drain Ø1/2" GAS (optional)

d1 Connessione filettata Ø1" Gas - per ingresso alimentazione
 Ø1" Gas threaded connection - for liquid supply inlet

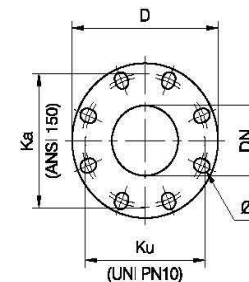
(1) Dimensioni in funzione della marca del motore installato.
 (1) Not certified dimensions according to installed motor manufacture.

Dimensioni Basamento Baseplate dimensions								
N°	B	C	E	F	L	G	ØS	N° fori holes
C11	1350	500	950	200	570	452	18	4

MOTORI ELETTRICI Electric Motors		
Grandezza Frame size IEC	Giri/min. RPM 1480 50Hz	
	kW	HP
180 M	18.5	25
180 L	22	30
200 L	30	40

FLANGE SPECIALI / SPECIAL FLANGES
 Dimensioni foratura secondo UNI 2223 PN10 e ANSI 150
 Drilling dimensions according to UNI 2223 NP10 and ANSI 150

Dimensioni flange Flanges dimensions					
DNa-DNm	D	Ku	Ka	P	N° fori holes
100	220	180	190.5	19	8



POMPA TIPO Pump type	Dimensioni costruttive Construction dimensions								
	DNa	DNm	f1	f2	H	HT	fb	Basamento tipo Baseplate type	Peso Weight
TRVX 1007	100	100	347	295	330	560	96	C11	255

Disegno schematico. Dimensioni in mm con tolleranze secondo EN 735-1995.
 Pesì indicativi in Kg, riferiti a pompe in ghisa escluso motore, non impegnativi.
 Schematic drawing. Dimensions in mm with tolerances to EN 735-1995 standards.
 Weights in Kgs, referred to pumps in cast iron without motor, not certified.

DIMENSIONE D'INGOMBRO / Overall dimensions
 POMPE PER VUOTO AD ANELLO DI LIQUIDO
 Liquid ring vacuum pumps
 SERIE / Series
TRVX 1000 / 1



pompaTravalmi s.p.a.
 CASTANO PRIMO (MILANO)

DIMENSIONE D'INGOMBRO / Overall dimensions
 POMPE PER VUOTO AD ANELLO DI LIQUIDO
 Liquid ring vacuum pumps

SERIE / Series
TRVX 1000 /1/M (pag. 2/2)

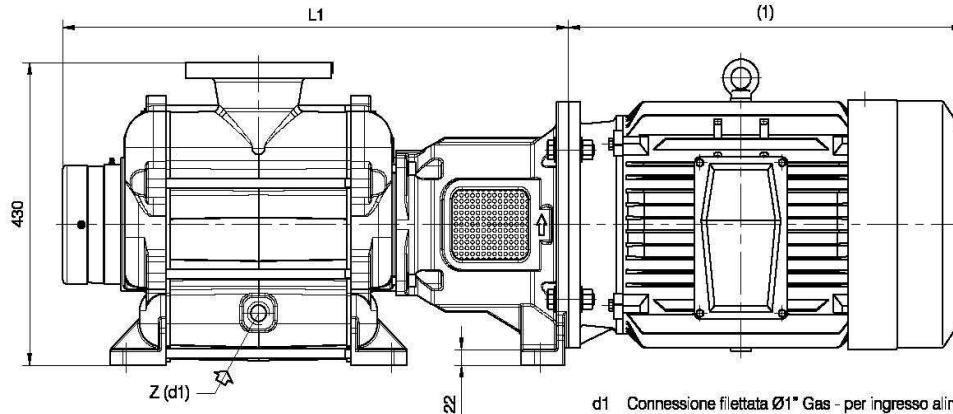
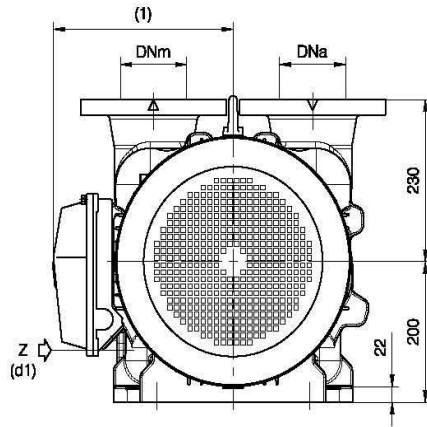


pompetravalmi s.p.a.
 CASTANO PRIMO (MILANO)

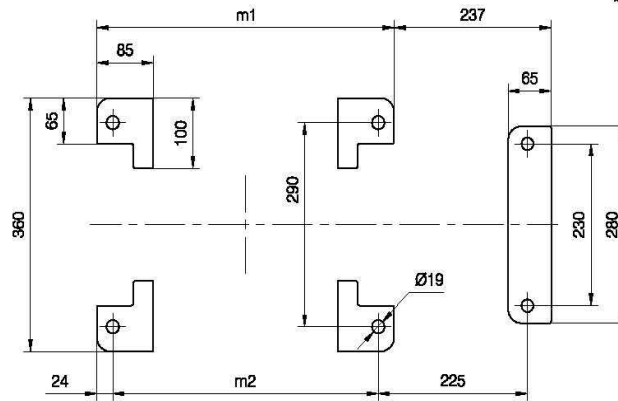
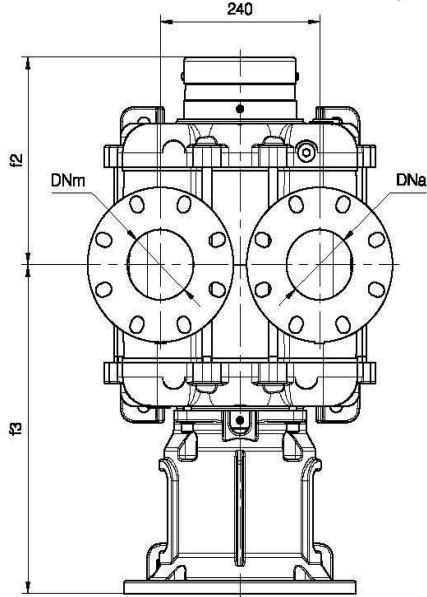
25

Versione **MONOBLOCCO**

CLOSE-COUPLED construction



d1 Connessione filettata Ø1" Gas - per ingresso alimentazione
 Ø1" Gas threaded connection - for liquid supply inlet



(1) Dimensioni in funzione della marca del motore installato.
 (1) Not certified dimensions according to installed motor manufacture.

Dimensioni costruttive Monoblocco Close-coupled construction dimensions

POMPA TIPO Pump type	motore 180 motor			motore 200 motor			motore 284-286 motor			motore 324-326 motor		
	f3	L1	Peso Weight	f3	L1	Peso Weight	f3	L1	Peso Weight	f3	L1	Peso Weight
TRVX 1007	467	762	214	489	784	228	482	777	223	484	779	224

MOTORI ELETTRICI Electric Motors		
Grandezza Frame size IEC	Giri/min. RPM 1480 50Hz	
	KW	HP
180 M	18.5	25
180 L	22	30
200 L	30	40
Grandezza Frame size NEMA	Giri/min. RPM 1770 60Hz	
	KW	HP
284TC	18.5	25
286TC	22	30
324TC	30	40
326TC	37	50

Disegno schematico. Dimensioni in mm con tolleranze secondo EN 735-1995.
 Pesì indicativi in Kg, riferiti a pompe in ghisa escluso motore, non impegnativi.
 Schematic drawing. Dimensions in mm with tolerances to EN 735-1995 standards.
 Weights in Kgs, referred to pumps in cast iron without motor, not certified.

RIF. - Ref.: E.C./C.T.
 DATA - Date: Dicembre '06 - December '06

SOSTITUISCE - Replaces: 7261-67.1L2.2001.01.01
 N°.: 7261-67.1L2.2001.02.01